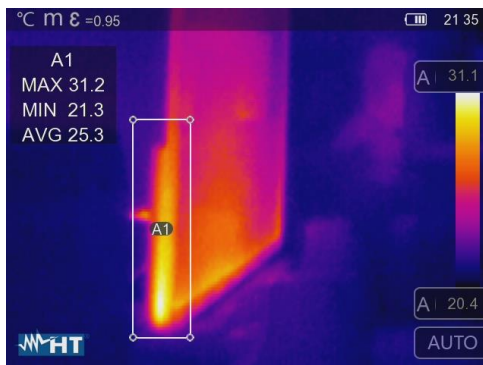


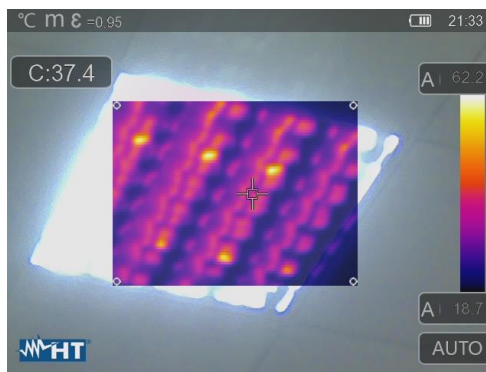
The **THT120** model is a 120x120pxl resolution professional infrared camera with capacitive touch-screen TFT colour display for quick and intuitive advanced use by any kind of thermograph operator



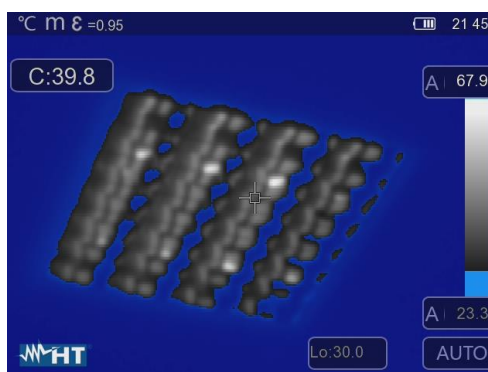
Hot and Cold points of a IR image



Advanced analysis with "Area" zone



Fusion image (PiP function)



"Low alarm zone" isotherm feature



1. IMAGING PERFORMANCE

Thermal	
Detector type	UFPA
Spectral range	8 ÷ 14µm
Resolution / Pxl size	120 x 120 pxl / 17µm
Thermal sensitivity/NETD	<0.05°C @ 30°C / 50mK
Field of View (FOV)	15.6° x 15.6°
Focal lens / F-number	7.5mm / 1.0
Minimum focal distance	0.5m
IFOV (@1m)	2.26mrad
Focusing	Manual on lens
Image frequency	50Hz
Color palettes	8 Standard + 4 Isotherms
Visible	
Integrated camera	2Mpxl, FOV 65°

2. IMAGING / IR VIDEO DISPLAY

Display type	3.5" TFT color, capacitive touch-screen, high brightness
Image mode	IR, Visible, Fusion PiP, Auto Fusion
IR Video	Recording and saving MP4 format
Electronic zoom	x1 ÷ x32 in continuous way

3. TEMPERATURE MEASUREMENT

Range	Resolution	Accuracy (*)
-20°C ÷ 650.0°C	0.1°C	±2%rdg or ±2°C (higher value)
-4.0°F ÷ 1202.0°F	0.1°F	±2%rdg or ±3.6°F (higher value)

(*) Ambient temperature: 10°C ÷ 35°C, Object temperature: >0°C

4. TEMPERATURE MEASUREMENT SCREENING MODE

Range	Resolution	Accuracy
32.0°C ÷ 42.0°C	0.1°C	±0.5°C
89.6°F ÷ 107.6°F	0.1°F	±0.9°F

5. GENERAL SPECIFICATIONS

Measurement cursors	4 (1 fixed central + 3 freely positionable on image)
Measurement modes	Automatic / Manual / Histogram
Emissivity correction	0.01 ÷ 1.00 + internal table with common materials
Measurement functions	Automatic correction based on distance, relative humidity, ambient temperature, reflexed temperature, offset
Advanced analysis	Spots (max3), Lines (max 2), Areas (max 3), "Hot/Cold" points, Face mode temperature detection (max 10 persons)
Alarm on temperature	Associated to measurements spots
Temp. Compensation	only Screening mode
Operating temperature	-15°C ÷ 50°C
Operating humidity	10%RH ÷ 90%RH
Storage temperature	-40°C ÷ 70°C
Storage humidity	10%RH ÷ 90%RH
Encapsulation	IP54 according with IEC529
Shock	25G, according with IEC60068-2-29
Vibrations / Drop test	2G, according with IEC60068-2-6 / 2m
Dimensions (L x W x H)	240 x 100 x 110mm
Weight(battery included)	535g



6. IMAGE STORAGE AND EXTERNAL INTERFACE

Memory	Internal memory (3.4GB) + Micro SD card 16GB (max 32GB)
File format	JPEG standard (snapshots), HIR (radiometric)
Memory size	1000 pics/45min video (internal memory), >6000 pics (micro SD)
Textual annotation	With internal virtual keyboard
PC interface	USB-C (download IR images/videos to PC)
WiFi connection	For connection to mobile devices through HTProCamera APP

7. POWER SUPPLY

Battery type	Rechargeable Li-ION, 3,7V 2600mAh
Charging system	In camera
Battery life	Approx. 4 hours (stand-by and WiFi off)
External power	External adapter 100/240VAC (50/60Hz)/5VDC, 2400mA

**This instrument complies with Directive EMC 2014/35/EU and Directive RED 2014/53/EU
This instrument satisfies the requirements of European Directive 2011/65/EU (RoHS) and 2012/19/EU (WEEE)**

